

ShikiFactory100 – Modular cell factories for the production of 100 compounds from the shikimate pathway

**SHIKIFACTORY100** is a H2020 project aiming towards the production of 100 high-value added compounds from the shikimate pathway.



The new compounds will find applications in **food, pharma and cosmetics.**

ShikiFactory100 will enrich the pool of reactions and compounds using modern **retrosynthesis** methods for widely applied bacterial and yeast hosts: *E.coli* and *S.cerevisiae*.

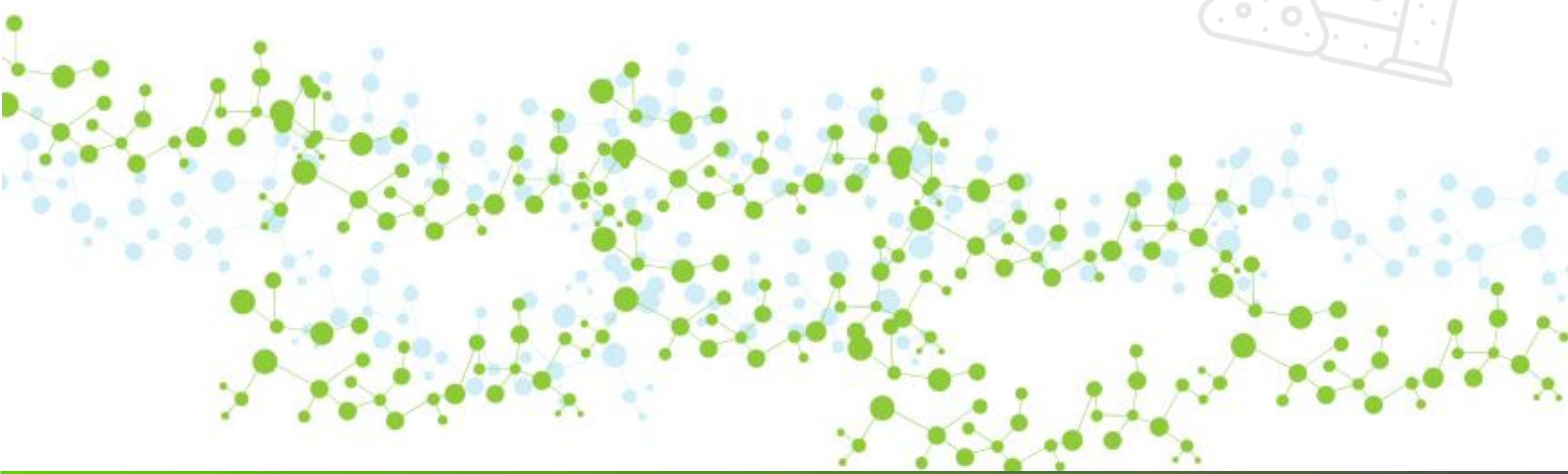
We will design chassis strains for maximum yield of precursor with state-of-the-art **computational strain optimisation algorithms.**



ShikiFactory100 will implement the new pathways in the chassis strains of the two hosts using **rapid prototyping** systems and **synthetic biology** methods.



The project aims at preparing the top 10 targets at g/L scale and producing **up to 100g of the final 2 products.**



FOLLOW US:



[www.shikifactory100.eu](http://www.shikifactory100.eu)



@shikifactory100



Shikifactory100



PROJECT COORDINATOR

**SILICOLIFE**

PROJECT PARTNERS



Universidade do Minho



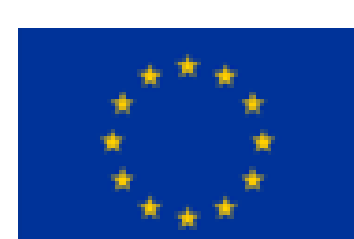
EMBL



The University of Manchester



EPFL



This project has received funding from the European Union's Horizon 2020 research and innovation programme under grant agreement 814408.